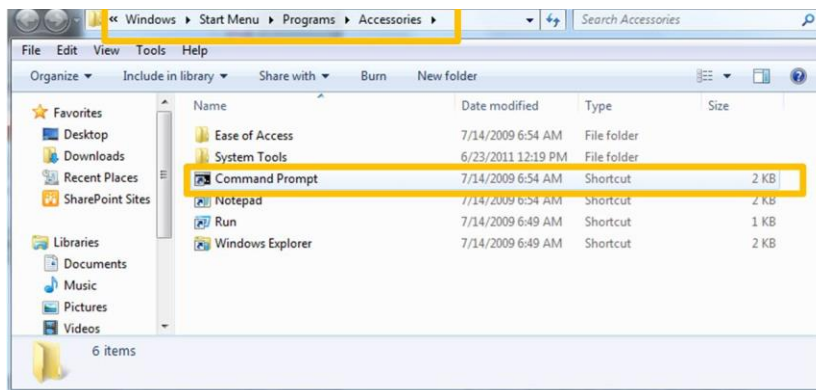


Command Prompt (Windows only)

To find your Host Name and Physical Address using the Windows Command Prompt, follow the below steps:

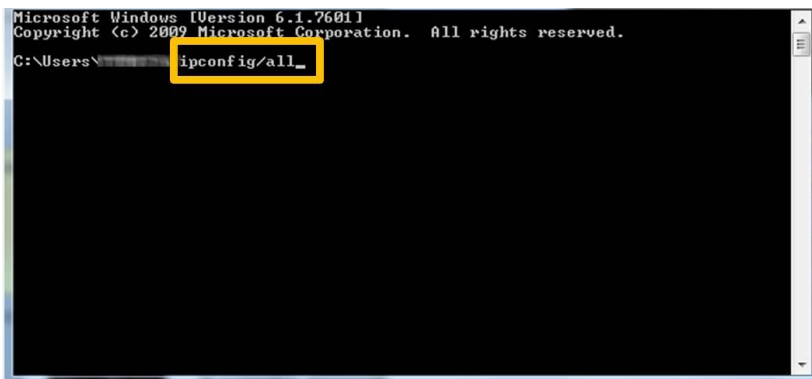
1. Open the **Command Prompt** window by clicking on **Start ► (All) Programs ► Accessories ► Command Prompt**

Note: If you do not have access to the Command Prompt, please contact your IT department, or someone with administrative rights to your machine, to help you locate the information.



[View Larger](#)

2. Type **ipconfig/all** and press the **Enter** key.



[View Larger](#)

3. Your **Host Name** will appear at the top, under the section **Windows IP Configuration**.

Your **Physical Address** will appear under the section **Ethernet adapter Local Area Connection**.

Note: Do not use the physical address for any Wireless or Bluetooth devices, as these are not valid and your Network license will not work. If there is more than one physical Ethernet connection, it does not matter which one you use.

```
Microsoft Windows [Version 6.1.7601]
Copyright (c) 2009 Microsoft Corporation. All rights reserved.

C:\Users\> ipconfig/all

Windows IP Configuration

Host Name . . . . . :
Node Type . . . . . :
IP Routing Enabled. . . . . :
WINS Proxy Enabled. . . . . :
DNS Suffix Search List. . . . . :

Wireless LAN adapter Wireless Network Connection 2:

Connection-specific DNS Suffix . :
Description . . . . . :
#2
Physical Address. . . . . :
DHCP Enabled. . . . . :
Autoconfiguration Enabled . . . . . :
Link-local IPv6 Address . . . . . :
IPv4 Address. . . . . :
Subnet Mask . . . . . :
Lease Obtained. . . . . :
Lease Expires . . . . . :
Default Gateway . . . . . :
DHCP Server . . . . . :
DHCPv6 Iaid . . . . . :
DHCPv6 Client DUID. . . . . :

DNS Servers . . . . . :

Primary WINS Server . . . . . :
Secondary WINS Server . . . . . :
NetBIOS over Tcpip. . . . . :

Ethernet adapter Bluetooth Network Connection:

Media State . . . . . :
Connection-specific DNS Suffix . :
Description . . . . . :
Physical Address. . . . . :
DHCP Enabled. . . . . :
Autoconfiguration Enabled . . . . . :

Ethernet adapter Local Area Connection:

Media State . . . . . :
Connection-specific DNS Suffix . :
Description . . . . . :
Physical Address. . . . . :
Autoconfiguration Enabled . . . . . :

View Larger
```

4. Close the **Command Prompt** window.